

저 Nox 소용량 가스버너

▶ GULLIVER BSD SERIES

▶ BS1	16/19 + 52 kW
▶ BS2	35/40 + 91 kW
▶ BS3	65/75 + 189 kW
▶ BS4	110/140 + 246 kW



BS가  
ON-OFF

가 ,  
Nox  
15,000 kcal/hr

4가  
class3

Nox 40ppm /Nm<sup>3</sup>  
250,000 kcal/hr

BmSchV 1996

EN 676 class3  
Directive

LRV-92

가 EMC

LVT



# 기술 자료

Model		▼ BS1D	▼ BS2D	▼ BS3D	▼ BS4D
Burner operation mode		Two stage			
Modulation ratio at max. output		--			
Servomotor	type	R.B.L.			
	run time	6 - 28			
Heat output	kW	16/19 - 52	35/40 - 91	65/75 - 109	110/140 - 246
	Mcal/h	13,8/16,3 - 44,7	30,1/34,4 - 78,2	55,9/64,5 - 162,5	94,6/120,4 - 211,6
Working temperature		°C min./max. 0/40			
Net calorific value G20 gas		kWh/Nm <sup>3</sup> 10			
G20 gas density		kg/Nm <sup>3</sup> 0,71			
G20 gas delivery		1,6/1,9 - 5,2	3,5/4 - 9,1	6,6/7,6 - 18,9	11/14 - 24,6
Net calorific value G25 gas		kWh/Nm <sup>3</sup> 8,6			
G25 gas density		kg/Nm <sup>3</sup> 0,78			
G25 gas delivery		1,9/2,2 - 6	4/4,7 - 10,6	7,6/8,7 - 22	12,8/16,3 - 28,6
Net calorific value LPG gas		kWh/Nm <sup>3</sup> 25,8			
LPG gas density		kg/Nm <sup>3</sup> 2,02			
LPG gas delivery		0,6/0,7 - 2	1,3/1,6 - 3,5	2,5/2,9 - 7,3	4,3/5,4 - 9,5
Fan		type Centrifugal with forward curve blades			
Air temperature		max °C 40			
Electrical supply		Ph/Hz/V 1/50/230 : 10%			
Auxiliary electrical supply		Ph/Hz/V --			
Control box		type R.B.L. 568			
Total electrical power		0,160	0,180	0,350	0,530
Auxiliary electrical power		kW --			
Protection level		IP 40			
Motor electrical power		0,09	0,09	0,15	0,25
Rated motor current		0,64	0,67	1,4	2
Motor start up current		2,6	2,7	5,6	8
Motor protection level		IP 20			
Ignition transformer		type Incorporated in the control box			
		V1 - V2 (-) - 8 kV			
		I1 - I2 (-) - 12 mA			
Operation		Intermittent (at least one stop every 24 h)			
Sound pressure		61	62	66	71
Sound power		W --			
CO emission		mg/kWh < 40			
NOx emission		mg/kWh < 80			
Directive		90/269/EEC, 89/336/EEC, 73/23/EEC, 98/37/EEC, 92/42/EEC			
Conforming to		EN 676 - LRV 92 - BImSchV 1996			
Certification		CE - 0085 AQ0409 BUWAL - Nr.100010			

## Reference conditions:

Temperature: 20°C

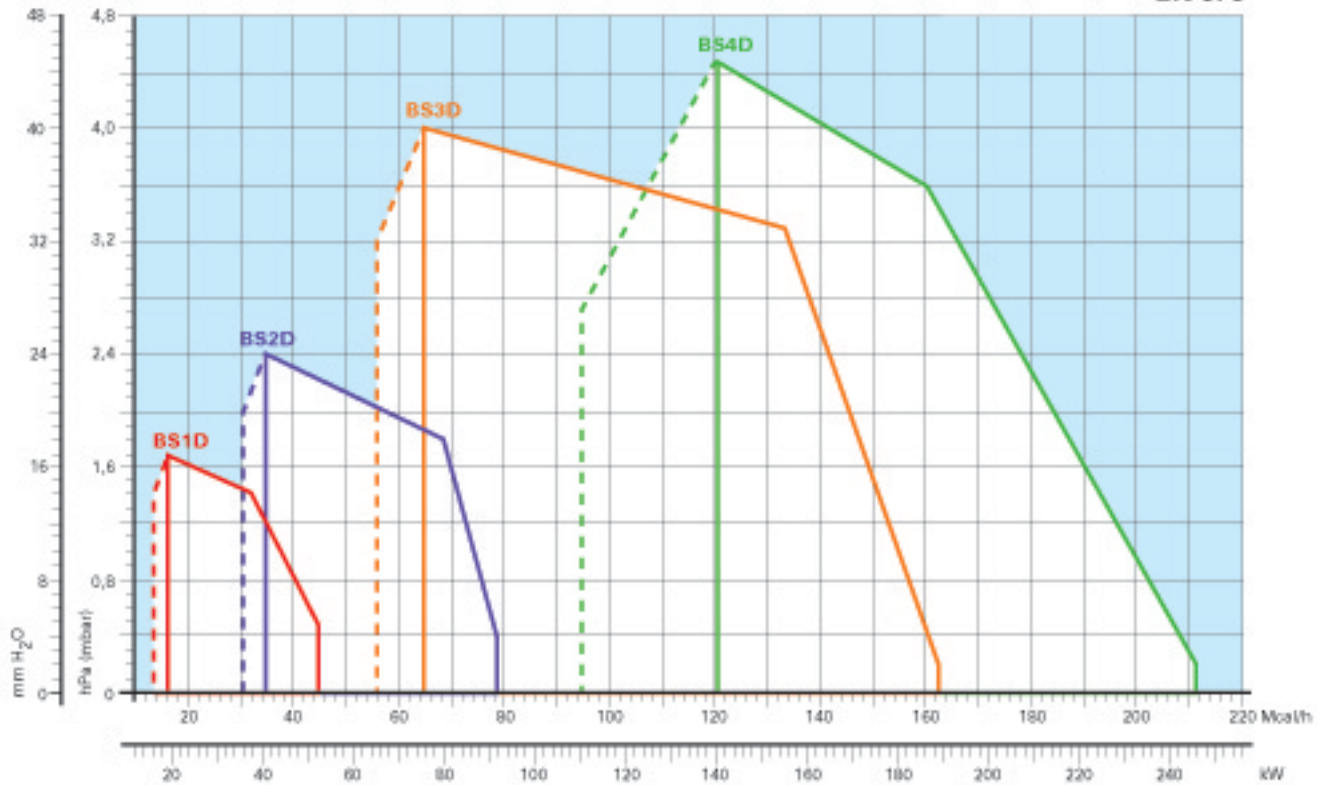
Pressure: 1013,5 mbar

Altitude: 100 m a.s.l.

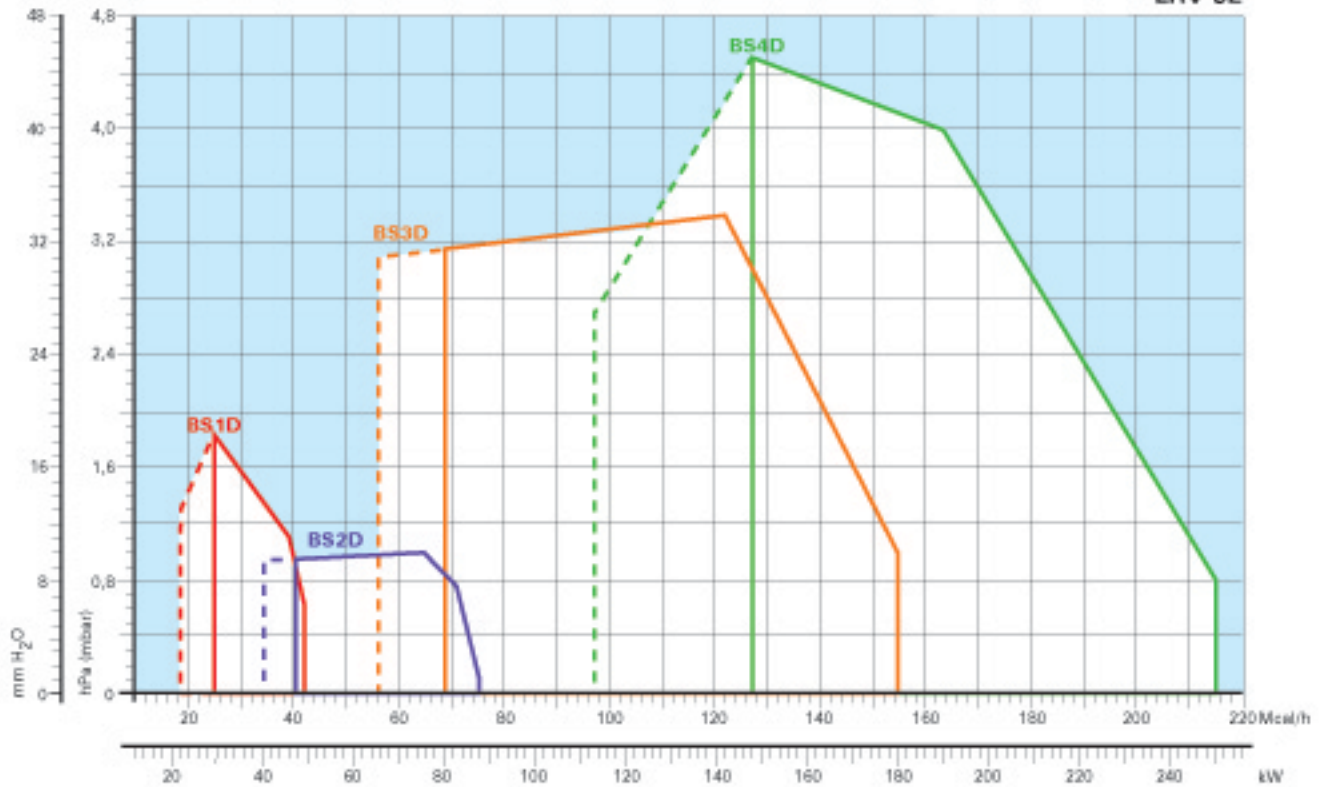
Noise measured at a distance of 1 meter.

# 노내압대 버너의 성능곡선

EN 676



LRV 92



Useful working field for choosing the burner

1<sup>st</sup> stage operation range

Test conditions conforming to EN 676 and LRV 92:

Temperature: 20 °C

Pressure: 1013,5 mbar

Altitude: 100 m a.s.l.





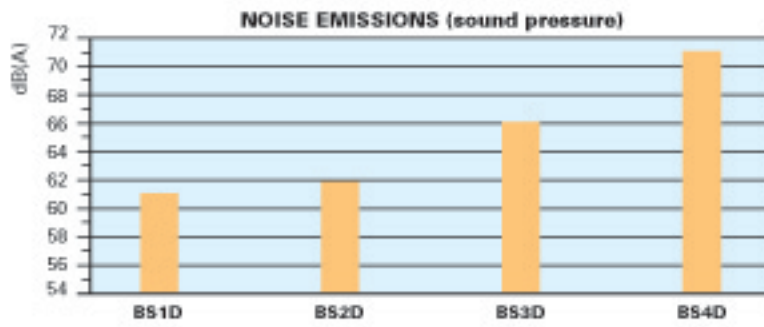
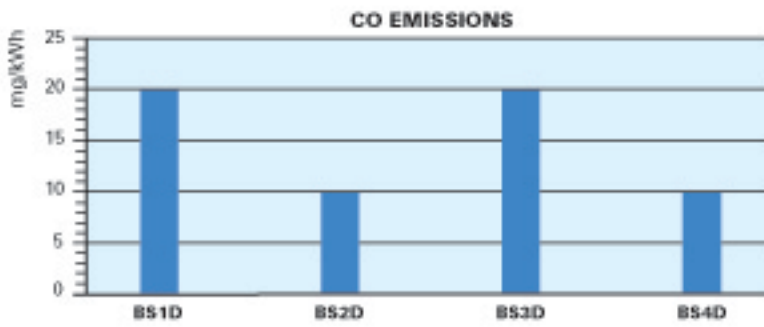
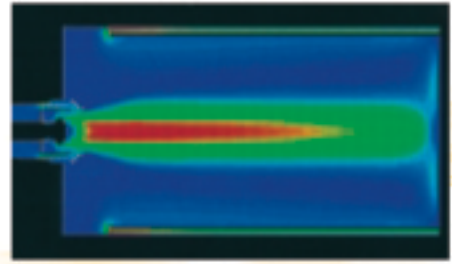
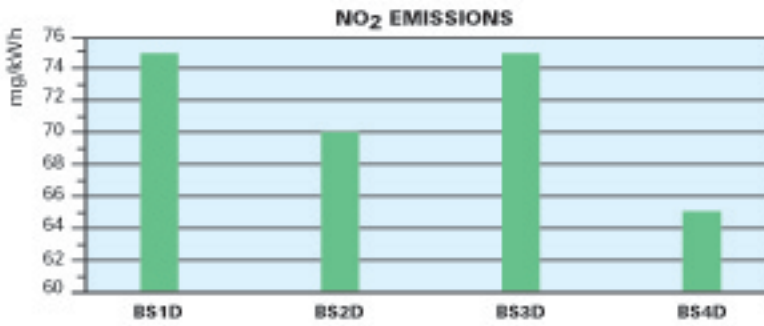
Nox, CO,

BS

class3 80mg/kwh

가  
가

가



EN676

Nox 0.437

ppm /Nm<sup>3</sup>

가

